

BALENO

Gear to Define



FLOW *That* EXCITES *You*

 <p>NEW</p> <p>LED PROJECTOR HEADLAMP WITH 3 POINT SIGNATURE LED LAMP</p>	 <p>NEW</p> <p>EXTERIOR LIQUID FLOW DESIGN</p>
 <p>NEW</p> <p>HEAD-UP DISPLAY</p>	 <p>NEW</p> <p>FUEL EFFICIENT K15B ENGINE</p>

Bring excitement to your journey with the comfortably elegant Suzuki Baleno. Dengan *liquid flow modern design* juga interior yang lebih nyaman, rasakan berkendara nyaman dan penuh percaya diri yang cocok untuk semua.

THE BEST TOTAL COST
OWNERSHIP SMALL HATCHBACK
GRIDOTO AWARD 2020





NEW

Dual Tones Polished 16" Alloy Wheel



NEW

Upper Front Grille Design



NEW

Front Bumper



NEW

LED Fog Lamp



NEW

Electric Foldable ORVM



NEW

Roof-End Spoiler



NEW

Window Chrome Garnish Ornament



NEW

Rear Comb. Lamp Design



NEW

Parking Sensor + Rear Camera



NEW

Rear Bumper Design

Color VARIANT



PRME CELESTIAL BLUE

PRME SPLENDID SILVER

PRME GRANDEUR GREY

PRME OPULENT RED

PRME LUXE BEIGE

PRME ARTIC WHITE

PEARL MIDNIGHT BLACK



Three Dimensional Design Seat



Rear AC Vents & USB Sockets



**Sun Visor With Ticket Holder
And Illumination Lamp (R/L)**



**Auto Dimming Inside
Rear View Mirror**



Satin Silver Ornament A/C List



Tilt And Telescopic Steering



Armrest Storages



**Gear Shift Knob
Metallic Medium Grey Color**



**Front USB And
Accessory Socket**



**Woven fabric with
stylish blue accents**



**Center Console Cup Holder
& Center Lower Tray**



Sliding front armrest



Front & Rear Door Pocket



Spacious Luggage



Comfortable
INTERIOR

Dengan interior yang lebih nyaman & modern,
semua orang bisa merasakan sensasi
berkendara yang menyenangkan.

New Dashboard Design

Splendid FEATURES

Kenyamanan maksimal hadir dengan fitur-fitur premium terbaru yang lebih canggih, untuk melengkapi pengalaman berkendara Anda.



Auto Climate A/C with Heater



Floating Audio Design



Steering Wheel with Leather Cover, Audio Switch Control & Bluetooth Connection



Cruise Control



6.8" Head Unit Touch Screen with Smartphone Linkage



Sporty Meter Cluster



5-SPEED MANUAL



4-SPEED AUTOMATIC

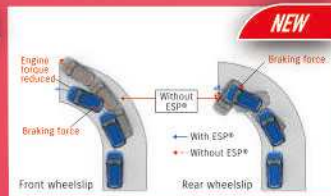
Transmission

Exceptional SAFETY & SECURITY

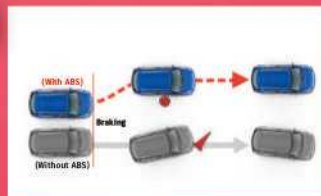
Teknologi terkini diaplikasikan untuk memberikan rasa tenang dalam keamanan yang terbaik



Hill Hold Control (AT)



Electronic Stability Program (ESP)*



Braking System (ABS, EBD & BA)



6 Airbags



HEARTECT Platform Body



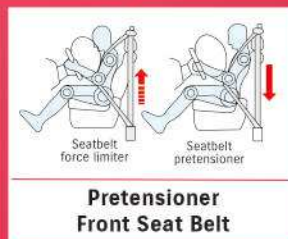
Fire Extinguisher



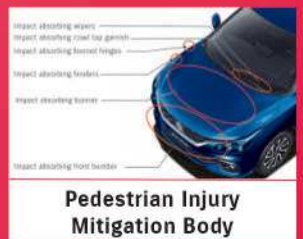
Immobilizer



Isofix



Pretensioner Front Seat Belt



Pedestrian Injury Mitigation Body

Delightful ACCESSORIES



Scan QR code berikut untuk detail accessories



Front Skid Plate, Gray and Black



Rear Skid Plate, Gray and Black



Floor mat



Body Side Moulding with black insert



Door Sill Guard, Metal Sill Painted Type



Door Visor, Premium Steel Insert



Mud Flap, Rigid

NEW

Liquid Flow

EXTERIOR DESIGN

Berkendara lebih percaya diri dengan *liquid flow design* yang elegan. Bentuk aerodinamisnya membuat perjalanan lebih senyap dan efisien bahan bakar.



LED Projector

with 3 POINT SIGNATURE LED LAMP

NEW

HEADLAMP



NEW

LED TAIL LAMP



Ciptakan pesona tersendiri dan curi perhatian di jalan dengan 3 point Signature LED Lamp dan fitur Guide Me Light with Auto Headlight, yang akan membuat perjalanan Anda semakin mantap.

NEW



Fuel Efficient

K15B ENGINE

Dilengkapi dengan K15B Engine yang menghasilkan efisiensi impresif, pembakaran yang mulus, tidak berisik, dan pengalaman berkendara yang sempurna.

NEW



Head-Up DISPLAY (HUD)

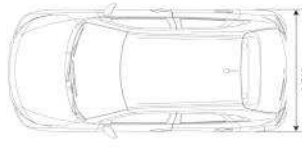
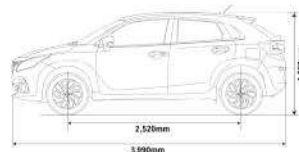
Lebih fokus dalam berkendara tanpa banyak gerakkan mata, *Head-Up Display* tampilkan berbagai informasi mulai dari kecepatan, *engine* RPM dan tampilan konsumsi bahan bakar.

SPECIFICATIONS **BALENO**

		M/T	A/T
DIMENSI / DIMENSION			
Panjang keseluruhan / Overall length	mm	3,990	
Lebar keseluruhan / Overall width	mm	1,745	
Tinggi keseluruhan / Overall height	mm	1,485	
Jarak poros roda / Wheelbase	mm	2,520	
Jarak pijak depan / Front tread	mm	1,505	
Jarak pijak belakang / Rear tread	mm	1,510	
Radius putar minimal / Minimum turning radius	m	5.1	
Ground Clearance	mm	160	
KAPASITAS / CAPACITIES			
Tempat duduk / Seating capacity	Orang / Persons	5	
Kapasitas tangki / Fuel tank capacity	Liter / Litres	37	
MESIN / ENGINE			
Jenis / Type		K15B	
Silinder / Number of cylinders		4 inline	
Jumlah katup / Number of valves		16	
Isi silinder / Piston displacement	cc	1,462	
Diameter x langkah / Bore x stroke	mm	74.0 x 85.0	
Daya Maksimal / Maximum output	PS / rpm	104.6/6,000	
Torsi maksimal / Maximum torque	Nm / rpm	138/4,400	
Sistem bahan bakar / Fuel system		Multipoint injection	
TRANSMISI / TRANSMISSION			
Perbandingan gigi / Gear ratio	1st	3.545	2.875
	2nd	1.905	1.568
	3rd	1.233	1.000
	4th	0.886	0.697
	5th	0.690	N.A.
Mundur / Reverse	3.250	2.300	
Perbandingan gigi akhir / Final gear ratio		4.353	4.145
RANGKA / CHASSIS			
Sistem kemudi / Electric power steering		Rack & Pinion, Electric Power Steering	
Suspensi / Suspension	Depan / Front	MacPherson Strut with Coil Spring	
	Belakang / Rear	Torsion Beam with Coil Spring	
Rem / Brakes	Depan / Front	Ventilated Disc	
	Belakang / Rear	Drum (leading and trailing)	
Ukuran Ban / Tyres		195/55 R16	
BERAT / WEIGHT			
Berat kotor kendaraan / Gross vehicle weight	kg	1,430	

EQUIPMENTS

Engine		Petrol 1.5L
Drive system		2WD
Seating capacity		5
CHASSIS		
Tyres & wheels	195/55R16 + alloy wheels	•
Spare tyre & wheel	195/55R16 + steel wheel	•
EXTERIOR		
Bumper	Body coloured	•
Front Grille	Black with Chrome Accent	•
Outside door handles	Chrome	•
VISIBILITY		
Headlamps	LED Projector	•
Wipers	Front: 2 speed (low, high) + adjustable intermittent + washer	•
Rear Back Door Defogger		•
Outside door mirrors	Body coloured	•
	Electric adjustable & foldable	•
Day/night rearview mirror	Automatic dimming	•
STEERING & INSTRUMENT PANEL		
3-spoke steering wheel with Leather Covered		•
Power steering with Tilt and telescopic		•
(Audio Switch, Cruise control, Hands Free Phone Control)		•
Information Display 4.2 inch LCD Display		•
DRIVING AMENITIES		
Electric windows	Front & Rear	•
Remote controlled door locks	With hazard lamp answerback function	•
Keyless Push Start System		•
Air conditioner	Automatic	•
Heater		•
Audio	Antenna	•
	Front & Rear speakers + 2x Tweeter	•
INTERIOR		
Cabin lights	Front cabin light (3-position)	•
Sun visors	Driver's side with Ticket Holder, Vanity Mirror & illumination lamp	•
	Passenger's side with Ticket Holder, Vanity Mirror & illumination lamp	•
Assist grips	Passenger's side	•
	Rear x 2	•
Cup holder	Front x 2	•
Bottle holder	Front x 2, Rear x 2	•
12V accessory socket	Front console	•
Fuel lid opener		•
Inside door handles	Chrome	•
Storage pockets	Front door	•
Head Up Display		•
SEATS		
Front seats	Seat Height Adjuster (Driver side)	•
	Head restraints (Separate type)	•
Rear seats	Seatback Pocket (Passenger Side)	•
	60:40 - Split Single Fold Head restraints x 3 (Separate type)	•
SAFETY & SECURITY		
ABS with EBD, Brake Assist function		•
ESP*		•
Hill Hold Control (AT)		•
Parking sensors	Rear	•
SRS front dual airbags		•
SRS Side airbags		•
SRS Curtain airbags		•
Seatbelts	Front: 3-point ELR seatbelts with pretensioners and force limiters	•
	Rear: 3-point ELR seatbelts x 3	•
Childproof rear door locks		•
Immobilizer		•



Catatan:

Untuk peningkatan dan penyesuaian dengan perkembangan teknologi, spesifikasi ini sewaktu-waktu dapat berubah tanpa pemberitahuan terlebih dahulu.

*ESP adalah merek dagang yang terdaftar untuk Daimler AG. ESP didesain untuk membantu Baleno agar mudah dikendalikan. Tetapi, efektivitasnya tergantung oleh kondisi berkendara dan keadaan permukaan jalan. Jika ban melewati limit cengkraman dan roda mulai berputar atau tergelincir, efektivitasnya mungkin akan berkurang.

Informasi lebih lanjut hubungi: